

# DETROIT WATER TEMPERATURE CONTROL AND DOWNSTREAM PASSAGE – FSS 30% DDR

Jeff Ament  
Kristy Fortuny  
Jon Rerecich  
Steve Schlenker

WFFDWG Meeting  
CENWP  
06 Mar 2018



US Army Corps  
of Engineers®  
Portland District



NOTE:  
TAINTER GATE

# AGENDA

Schedule

Floating Screen Structure 30% DDR Update



**US Army Corps  
of Engineers**®  
Portland District



# PROJECT SCHEDULE

## –Phase 1 (Selective Withdrawal Structure)

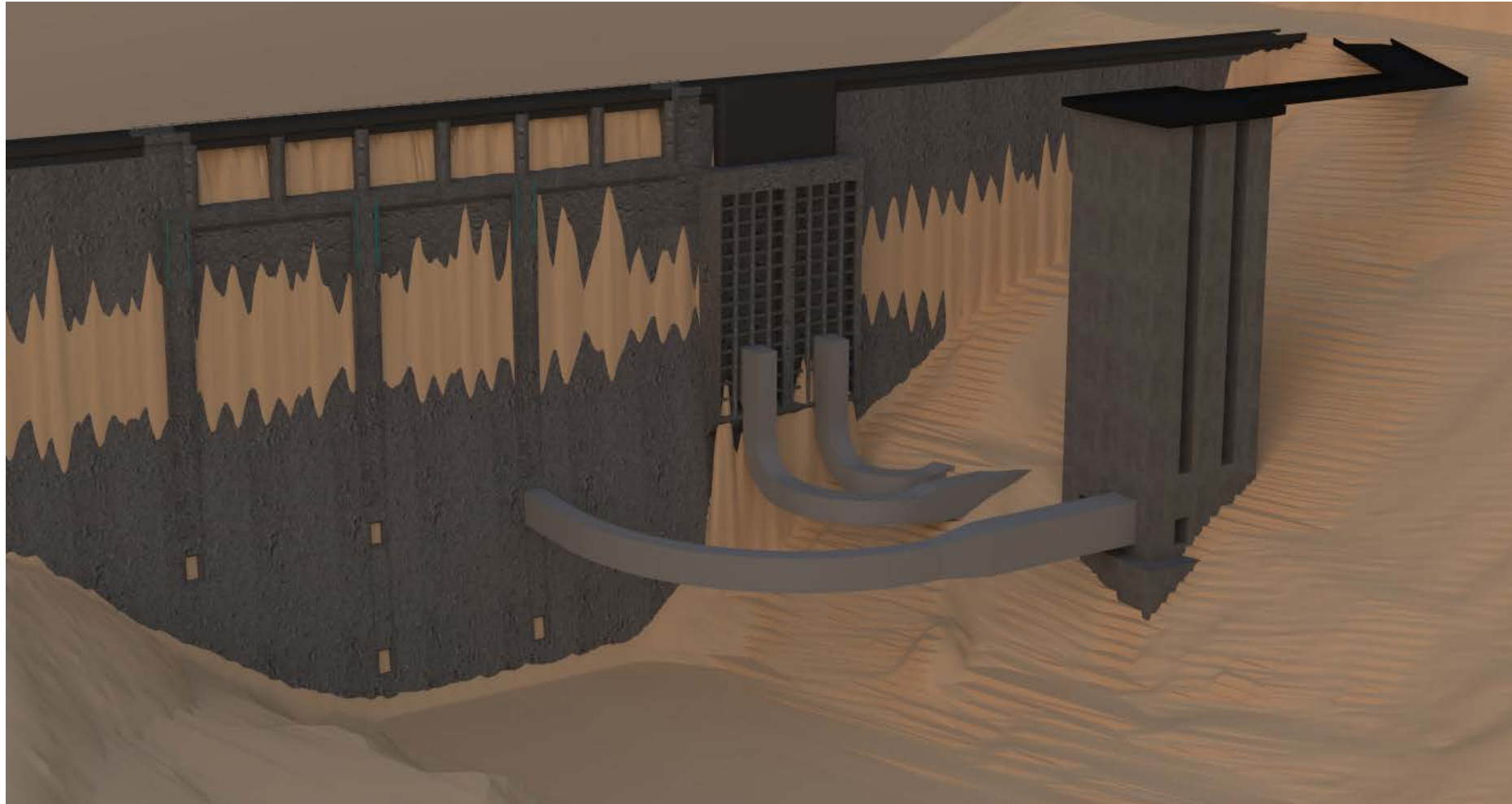
- SWS DDR Complete – September 2018 (currently at 60%)
- SWS P&S Complete – April 2020
- SWS Construction Contract Award – Oct 2020
- Phase 1 Complete – 2023

## – Phase 2 (Floating Screen Structure)

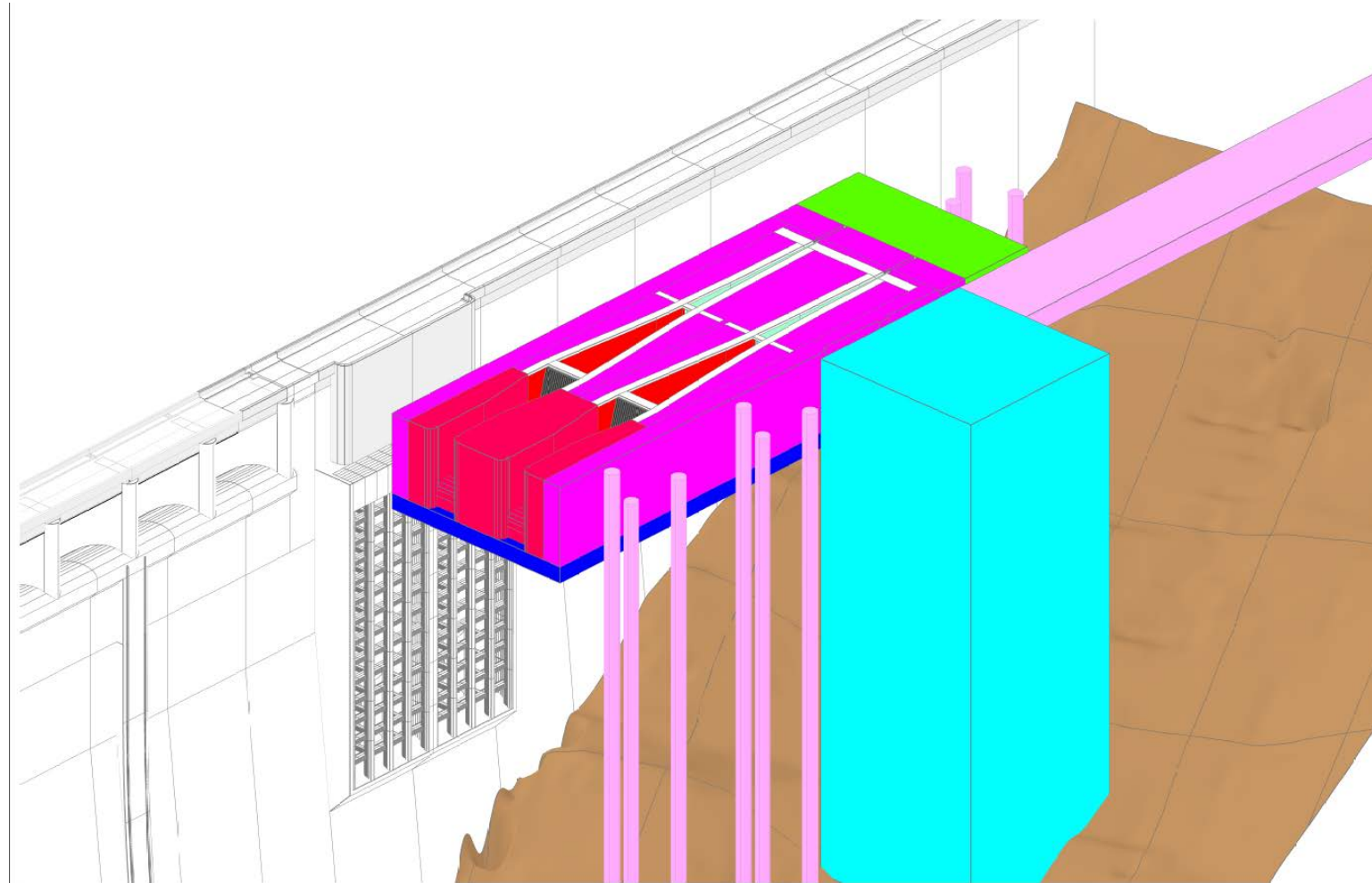
- FSS DDR Complete – November 2018 (currently at 30%)
- Revised FSS DDR complete - 2023 (Incorporates lessons learned)
- FSS P&S complete – 2025
- FSS Construction Contract Award – 2025
- Phase 2 Complete – 2028



# SWS – ISOMETRIC



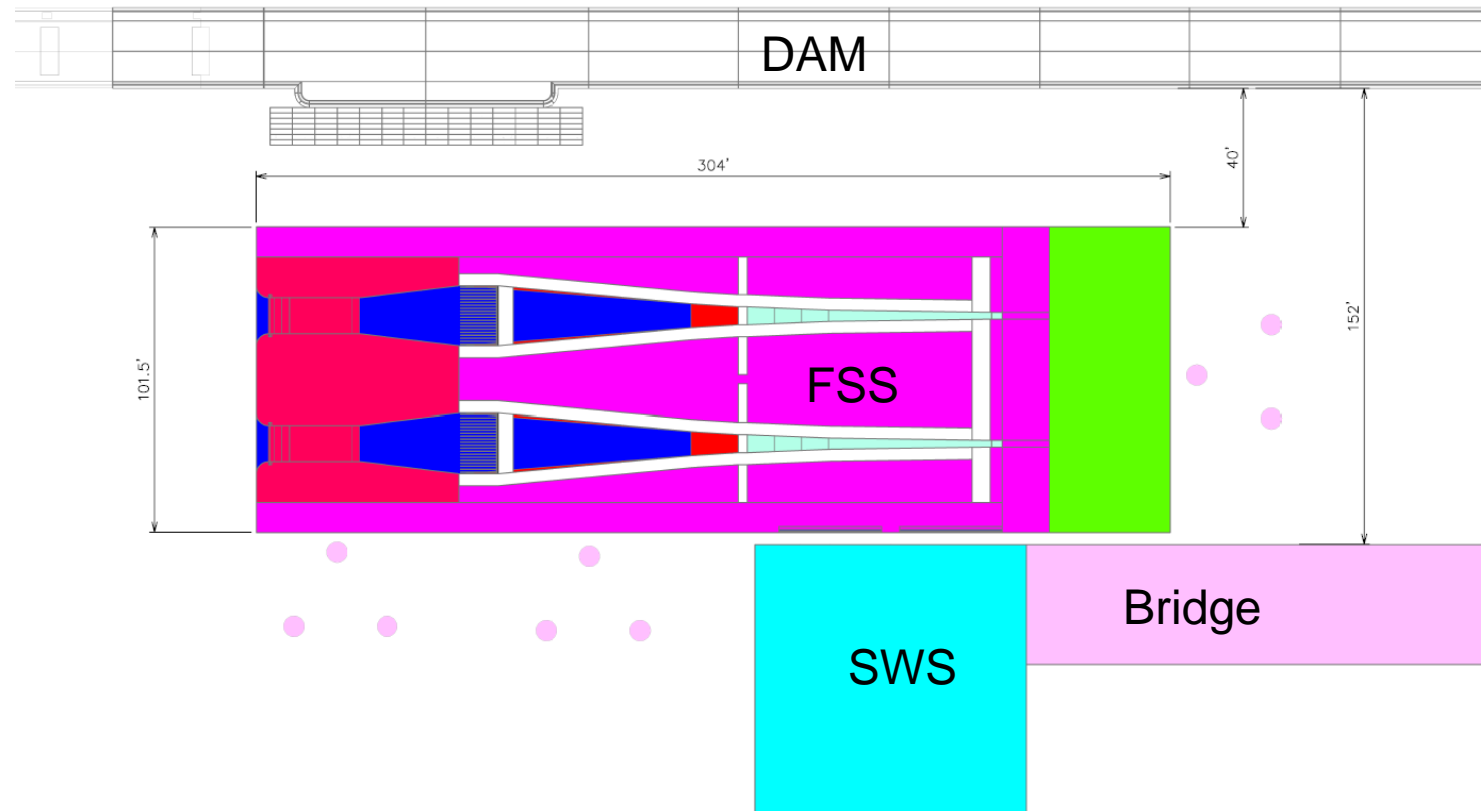
# SWS AND FSS - ISOMETRIC

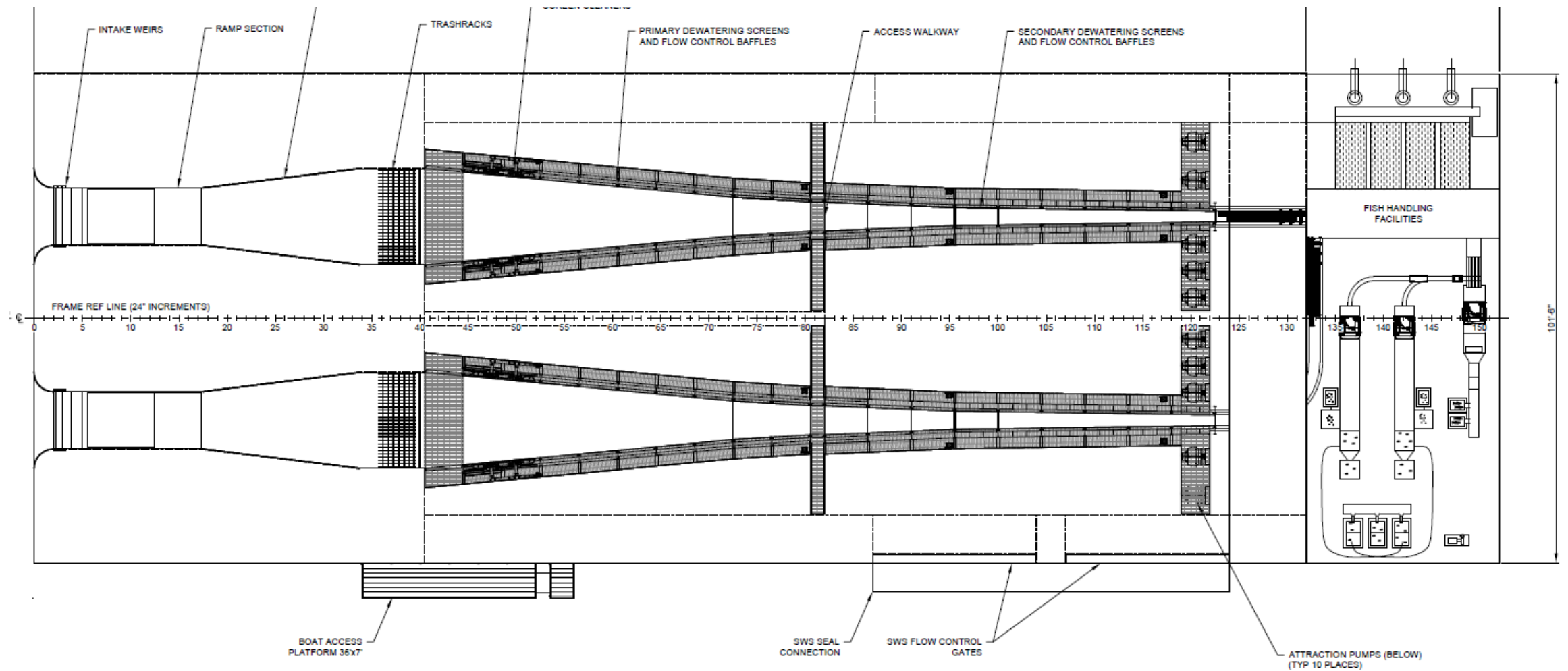


US Army Corps  
of Engineers®  
Portland District



# SWS AND FSS - PLAN

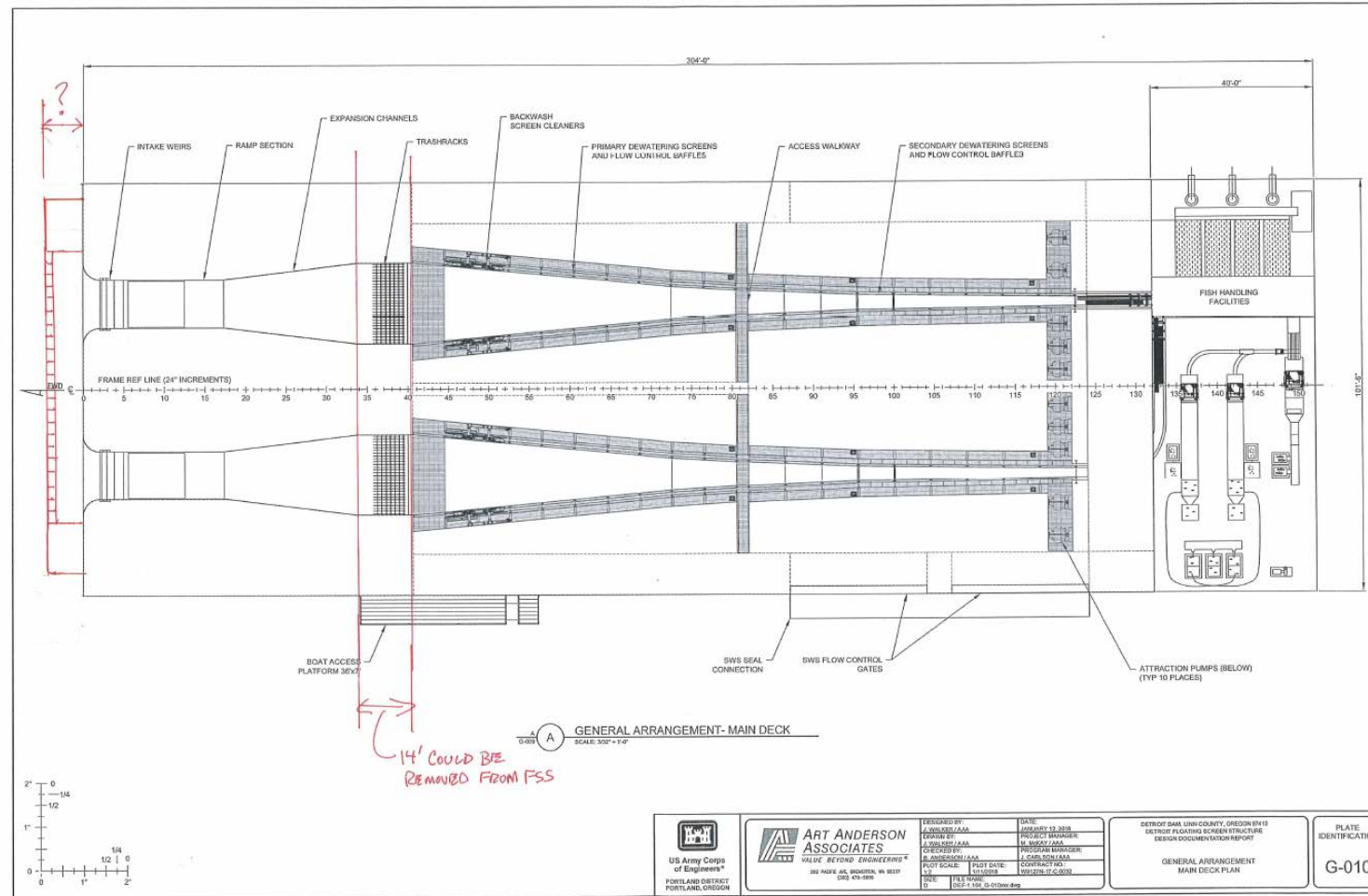




US Army Corps  
 of Engineers®  
 Portland District



# Trashrack Moved to Upstream of FSS (15 - 20 feet)



**US Army Corps of Engineers**  
Portland District



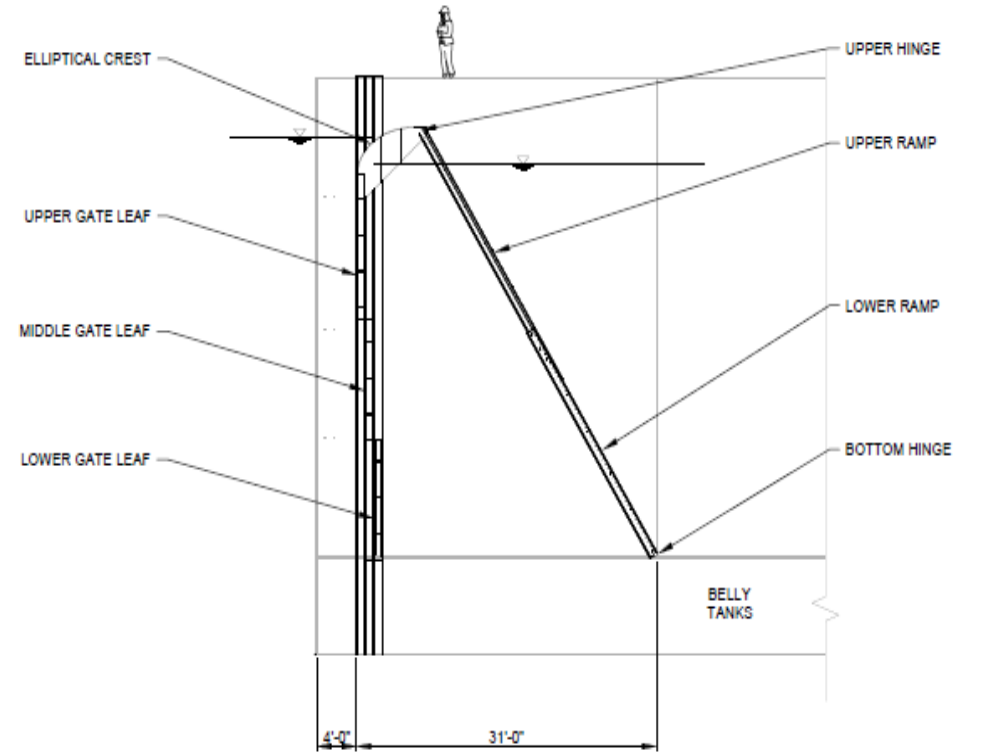
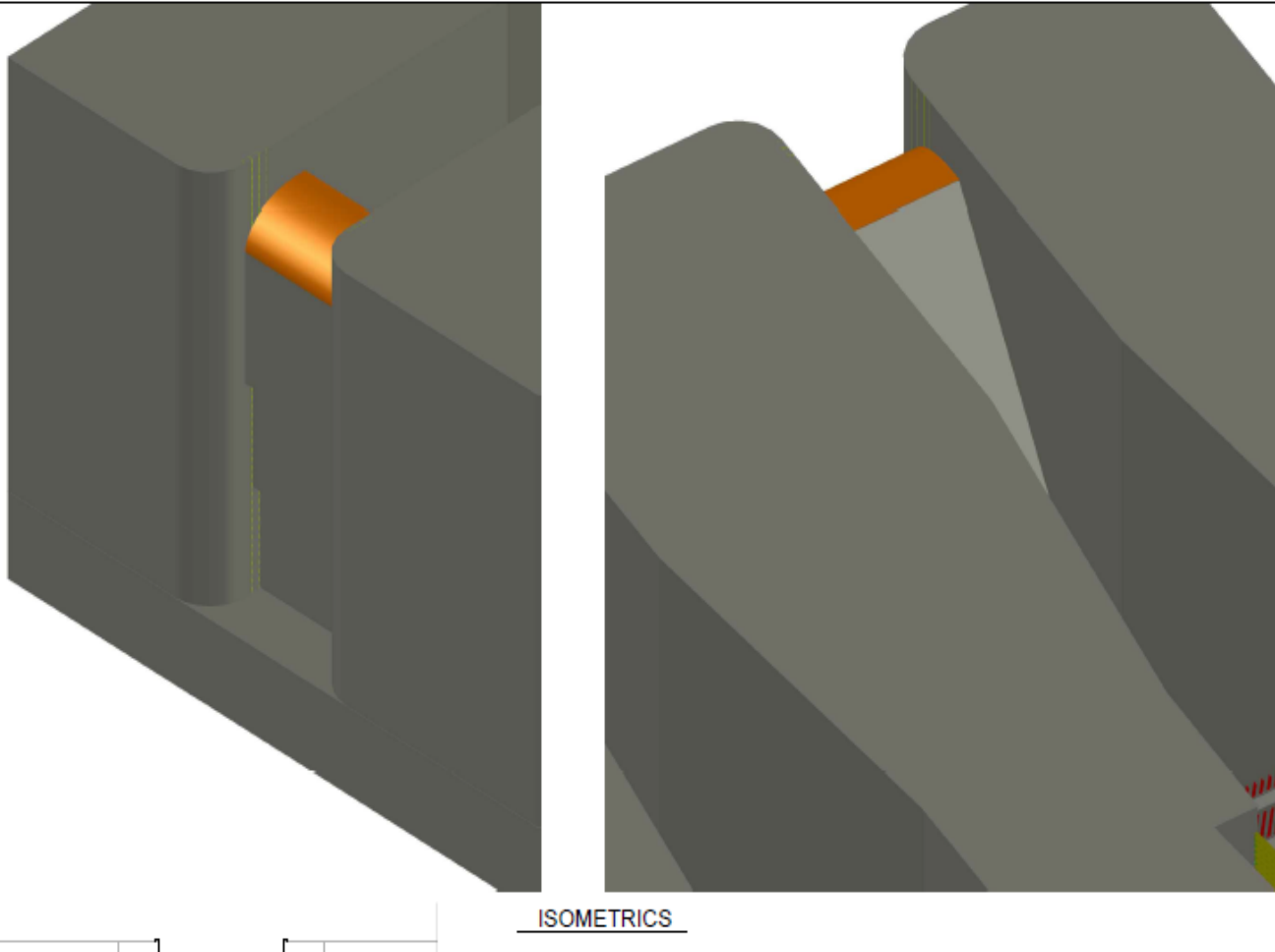


# FSS FLOWS

	FSS Flow (cfs)	FSS weir		Primary screen		Secondary screen		Coarse trashracks
		Submer- gence	Velocity	Ave. Velocities (ft/s)		Ave. Velocities (ft/s)		
		(ft)	(ft/s)	U/S End	D/S End	U/S End	D/S End	
max Criteria	4500	22.1	9.0	3.4	4.8	4.8	7.1	2.5
Max Q	5600	26.8	8.9	4.2	5.8	5.8	8.7	2.5
min Q	1000	11.2	8.5	1.5	2.2	2.2	3.3	2.5



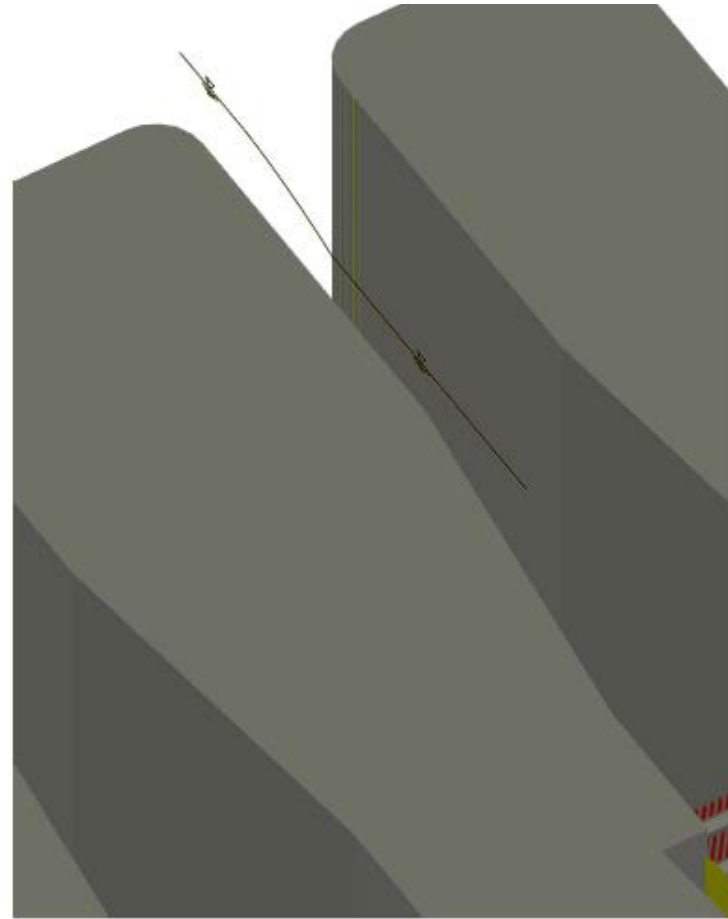
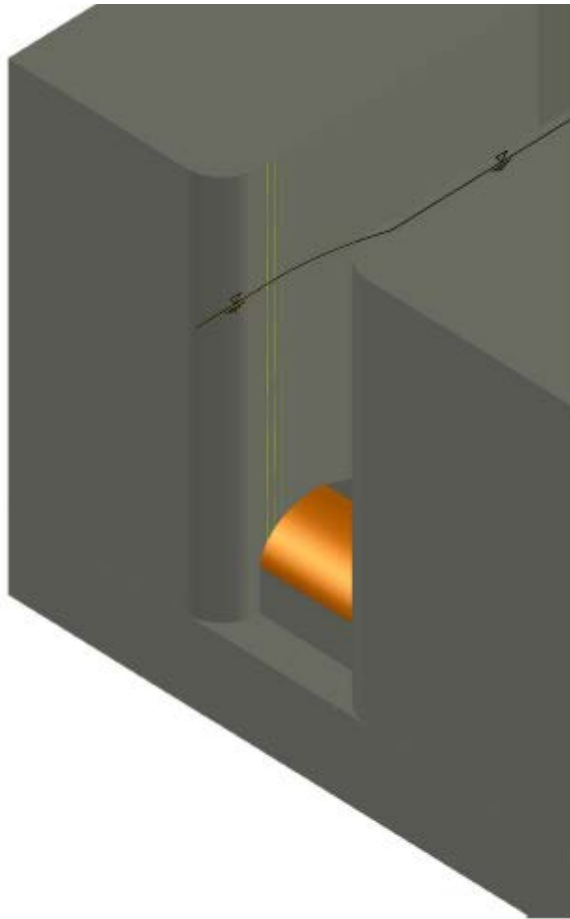
# ENTRANCE WEIR – UP POSITION



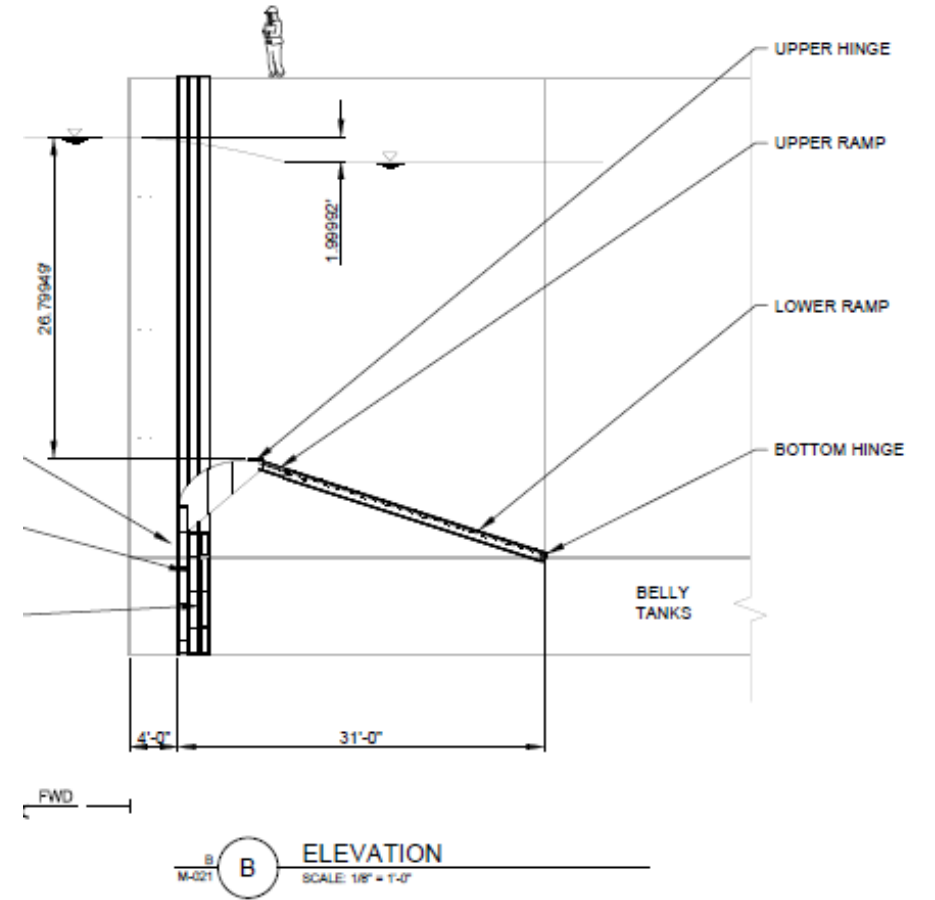
US Army Corps  
of Engineers®  
Portland District



# ENTRANCE WEIR – DOWN POSITION



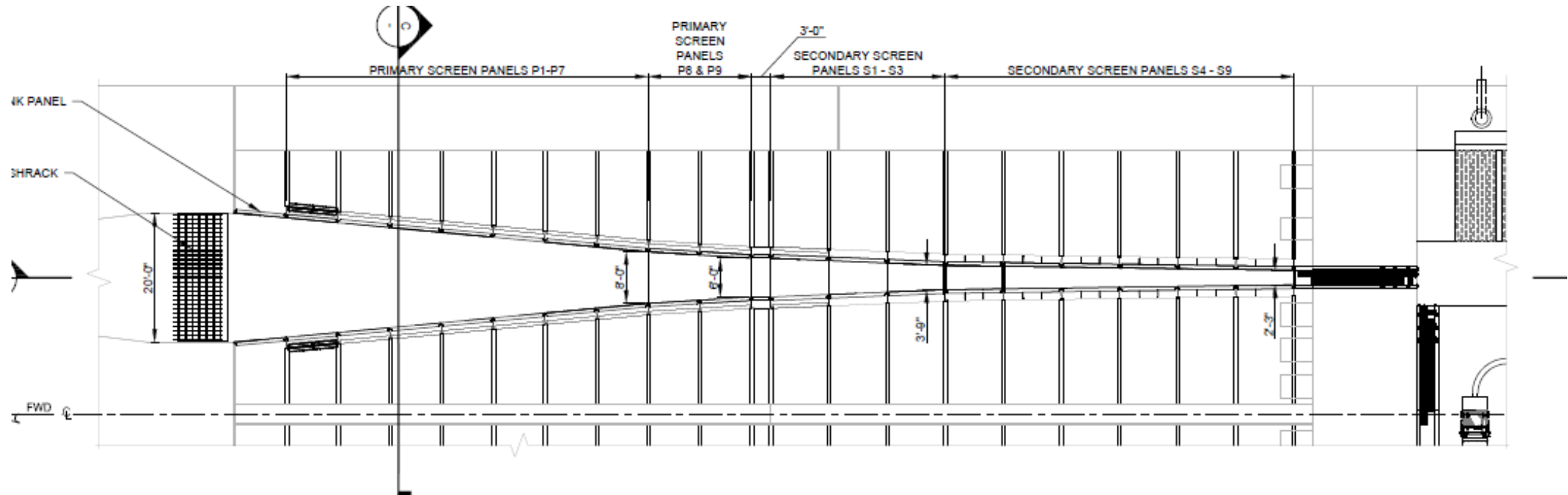
ISOMETRICS



US Army Corps  
of Engineers®  
Portland District



# DEWATERING SCREEN PLAN



NOTE: UPPER DECK NOT SHOWN FOR CLARITY.

A  
G-000

**DEWATERING SCREEN PLAN**

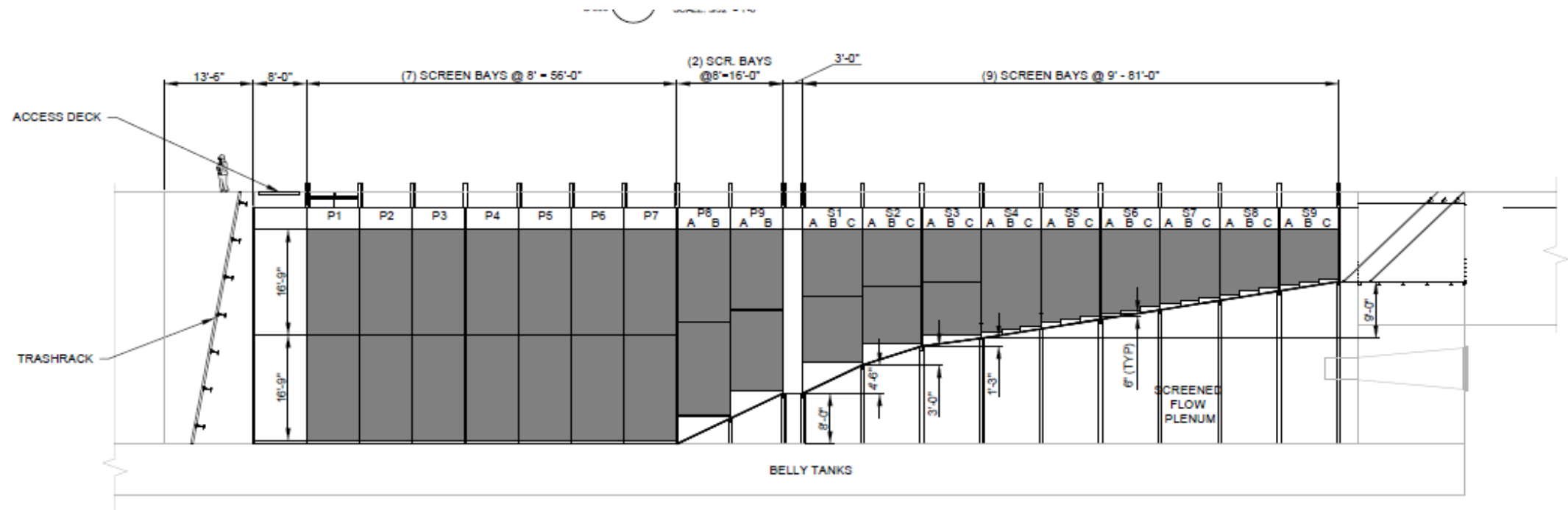
SCALE: 3/32" = 1'-0"



US Army Corps  
of Engineers®  
Portland District



# DEWATERING SCREEN ELEVATION



FWD

**ELEVATION**  
SCALE: 3/32" = 1'-0"

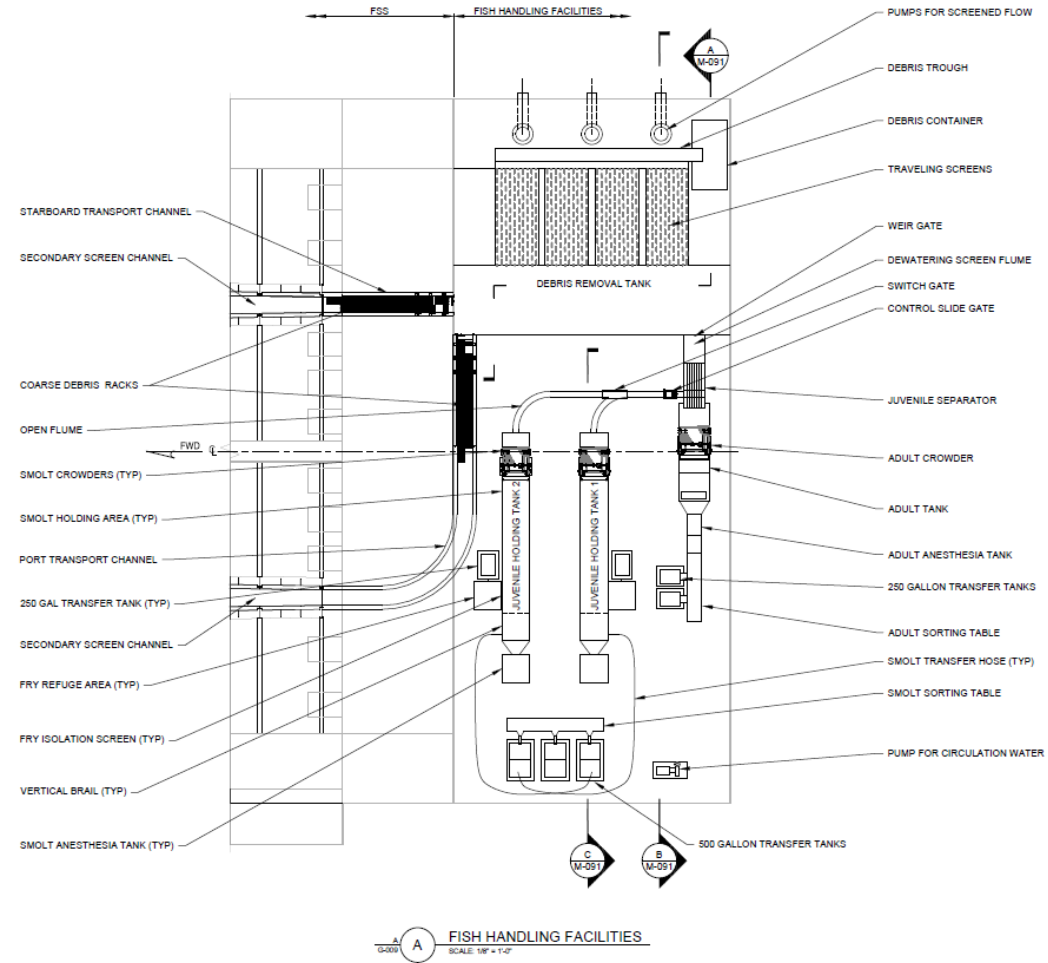
- 0  
- 1/4



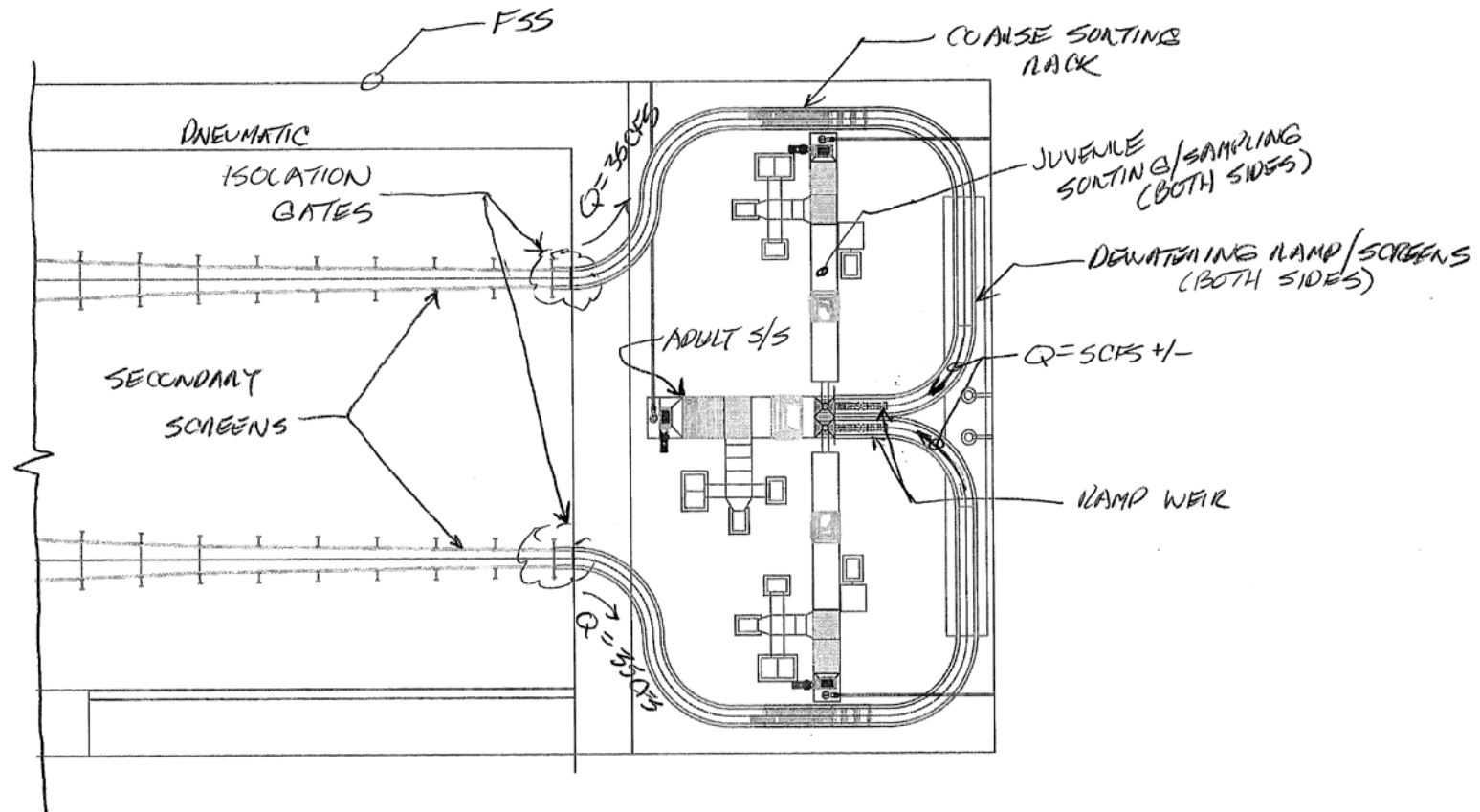
US Army Corps  
of Engineers®  
Portland District



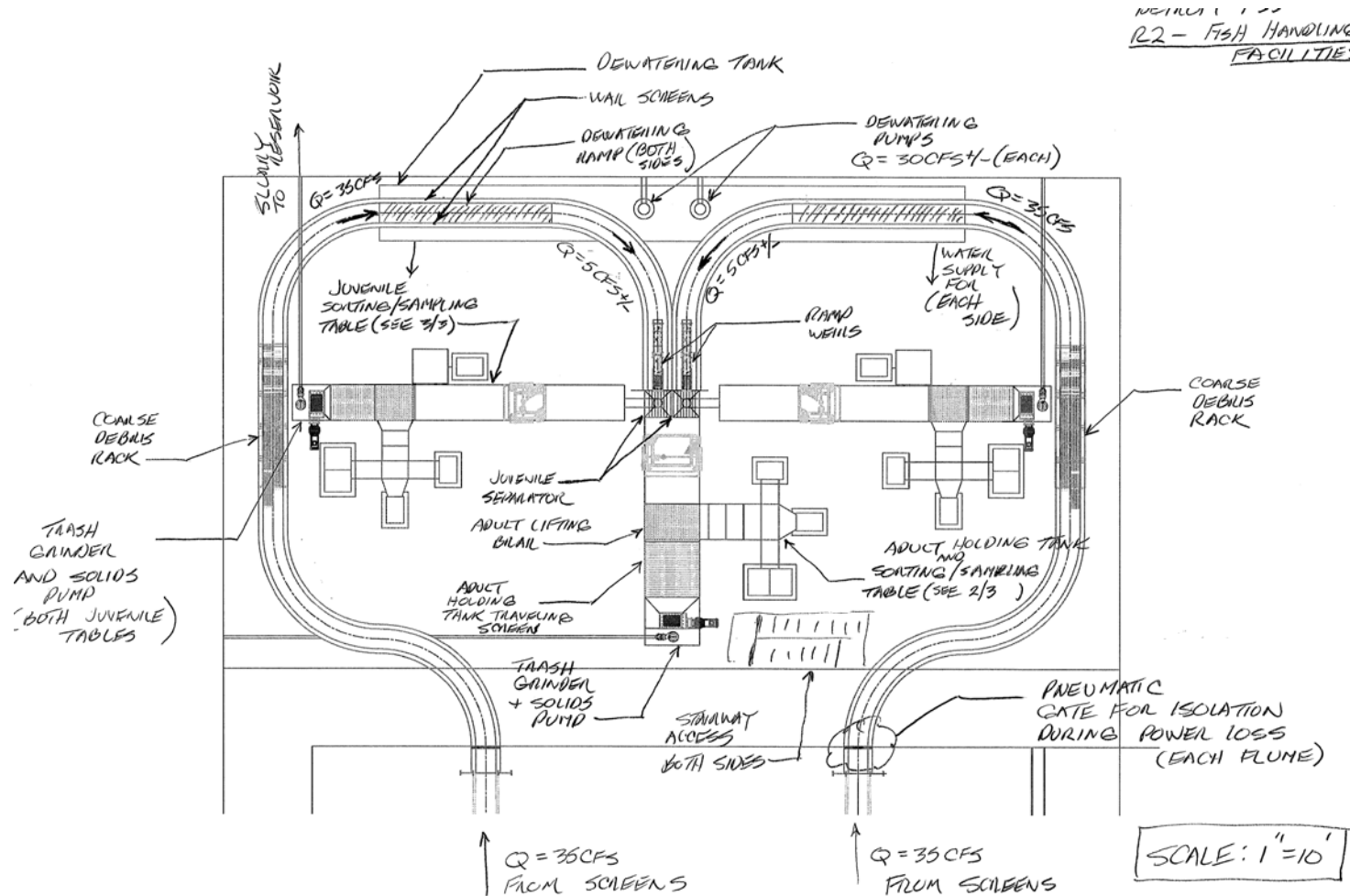
# FISH HANDLING LAYOUT – IN THE 30% DDR



# REVISED FISH HANDLING LAYOUT – WILL BE IN THE 60% DDR



# REVISED FISH HANDLING LAYOUT – CONTINUED





Questions?



**US Army Corps  
of Engineers**®  
Portland District

